



EXPEDITING EXPERTISE

 **ASIA School
of Business**
in collaboration with MIT Sloan Management
Iclif Executive Education Center

EXECUTIVE EDUCATION IN

Corporate
Governance

Leadership &
Management

Digitalization

Sustainability

A WORLD-CLASS BUSINESS SCHOOL IN THE HEART OF ASIA

The Asia School of Business (ASB), a collaborative effort between Bank Negara Malaysia and the Massachusetts Institute of Technology (MIT) Sloan School of Management, is one of the most prestigious and innovative universities in the world. ASB offers innovative and rigorous MBA and Executive Education programs that equip students with the knowledge, skills, and global perspectives necessary to succeed in the fast-paced and ever-changing business environment.

The Iclif Executive Education Center (Iclif) at Asia School of Business is a premier executive education center that provides training in leadership & management, sustainability, corporate governance, digitalization, certification programs, coaching and research by ASB faculty who are global thought leaders that help business professionals and executives advance in their careers. Our programs support the professional development of junior to senior management leaders, C-suites and Directors which enables them to apply the knowledge gained to be effective leaders. Each program is crafted to provide leaders with the essential knowledge, skills and innovative tools to navigate in today's emerging and complex world. Taught by globally renowned ASB faculty, our programs are designed to amplify leadership impact and organizational performance.



At ASB's Iclif Executive Education Center, you will receive a world-class education from ASB Faculty who emphasize academic rigor and excellence.



World Class Faculty

Recognized expertise in business and custom learning design for local and international companies.



Interactive, Action-Based Learning Approach

Experiential learning methods such as role plays, industry visits, case discussions, hackathons, simulations and thought-provoking facilitation-style teaching are employed in the training sessions.



State-of-the-art Campus Modelled after MIT

Exceptional business school facilities and residential which is one of the largest academic facilities in the region with technologically-equipped classrooms.



Strong Collaborative Style

Strong client relationship allows us to understand critical issues and develop appropriate solutions.



Global Knowledge and Learning Center

Comprehensive center to empower individuals with the knowledge and skills needed to thrive in an interconnected and rapidly changing world.



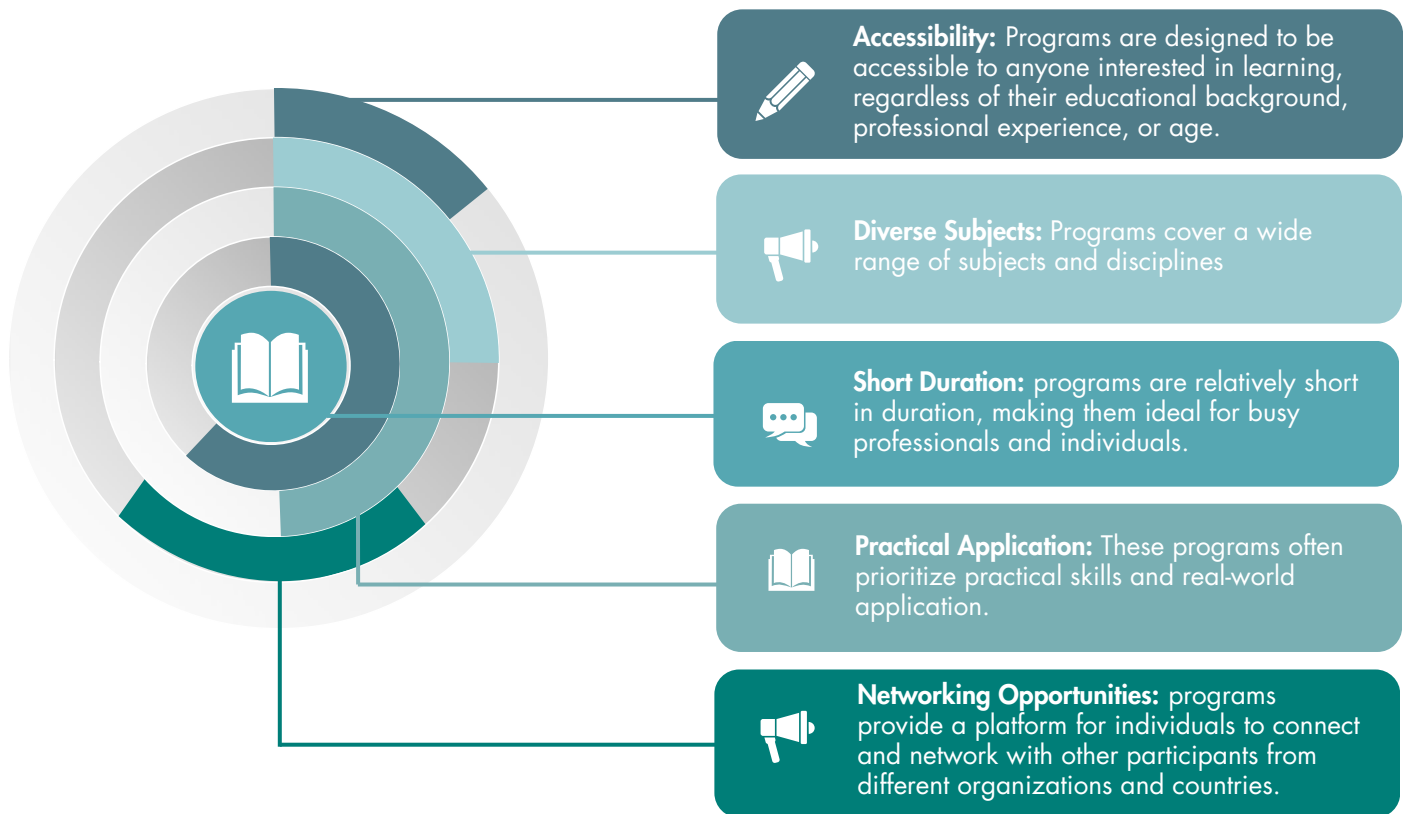
ASB's Research

ASB is strong in applied research with world-class centers designed for advancing scientific research, industry partnerships, and bringing together ASB thought leaders and visiting scholars to address critical issues facing Asia and the emerging world, especially in the areas of the Future of Education, Environment (ESG), and Empowerment.

World-class teaching meets innovation and emerging world expertise

Open Enrollment Programs

The ASB Iclif Executive Education Center's **open enrollment** programs are designed for busy professionals to upskill themselves with short, accelerated programs. Each course is self-contained and crafted to provide you with the essential knowledge, skills & tools to navigate in today's complex world.



Open enrollment learning programs are educational opportunities that are open to a wide range of individuals, typically without requiring prior qualifications or prerequisites. These programs provide a flexible and accessible way for people to enhance their skills, acquire new knowledge, and advance their careers. Participants could be from diverse backgrounds and experiences.



The subject matter was well covered from the basics of climate change, the importance of boards, case studies and trends & challenges. A good entry to understand the subject matter.

Climate Change: Impact on Banks & Role of the Board, 2022



This program was an extremely interesting and relevant, thought-provoking program. I thought it was great, and will encourage my other fellow Directors to take this class.

Governance in Groups Program, 2022

Custom-Built Programs

The ASB Iclif Executive Education Center's **custom-built** programs refer to programs tailored to meet the specific needs, goals, and preferences of learners. Built with the assistance of a dedicated faculty director and program design experts, our fully-customized programs allow clients to access targeted and specific content that bears in mind their unique conditions and circumstances. Enhanced by ASB's Action Learning philosophy, every custom program comes complete with intensive hands-on activities and actionable content that can be instantly applied into the workplace.

Professional Development and Upskilling

These programs help employees acquire new skills and knowledge relevant to their roles, contributing to both individual growth and organizational success.



Flexible Content Delivery

Programs often utilize a variety of content delivery methods, such as videos, interactive simulations, text-based materials, podcasts, and more.

Collaborative Learning Opportunities

Programs can also incorporate collaborative learning experiences to enable learners to share ideas, learn from each other's experiences, and develop valuable communication and teamwork skills.

Personalization

These programs recognize that every learner is unique, with different learning styles.

Accessibility and Inclusivity

Programs have the potential to cater to diverse learners.



EXECUTIVE EDUCATION AT A GLANCE

Leadership Programs

At ASB, our Leadership Programs are designed to develop and enhance the skills, knowledge, and abilities required for effective leadership and management roles within organizations. These programs aim to prepare individuals for leadership positions, whether in business, government, non-profit organizations, or other sectors, by providing them with the tools and insights needed to excel in these roles.

Upskill yourself with short programs developed for busy executives, high-potential managers, and business professionals worldwide. Each open enrollment program is self-contained and crafted to provide you with the knowledge, skills & tools to navigate in today's complex world.

Corporate Governance Programs

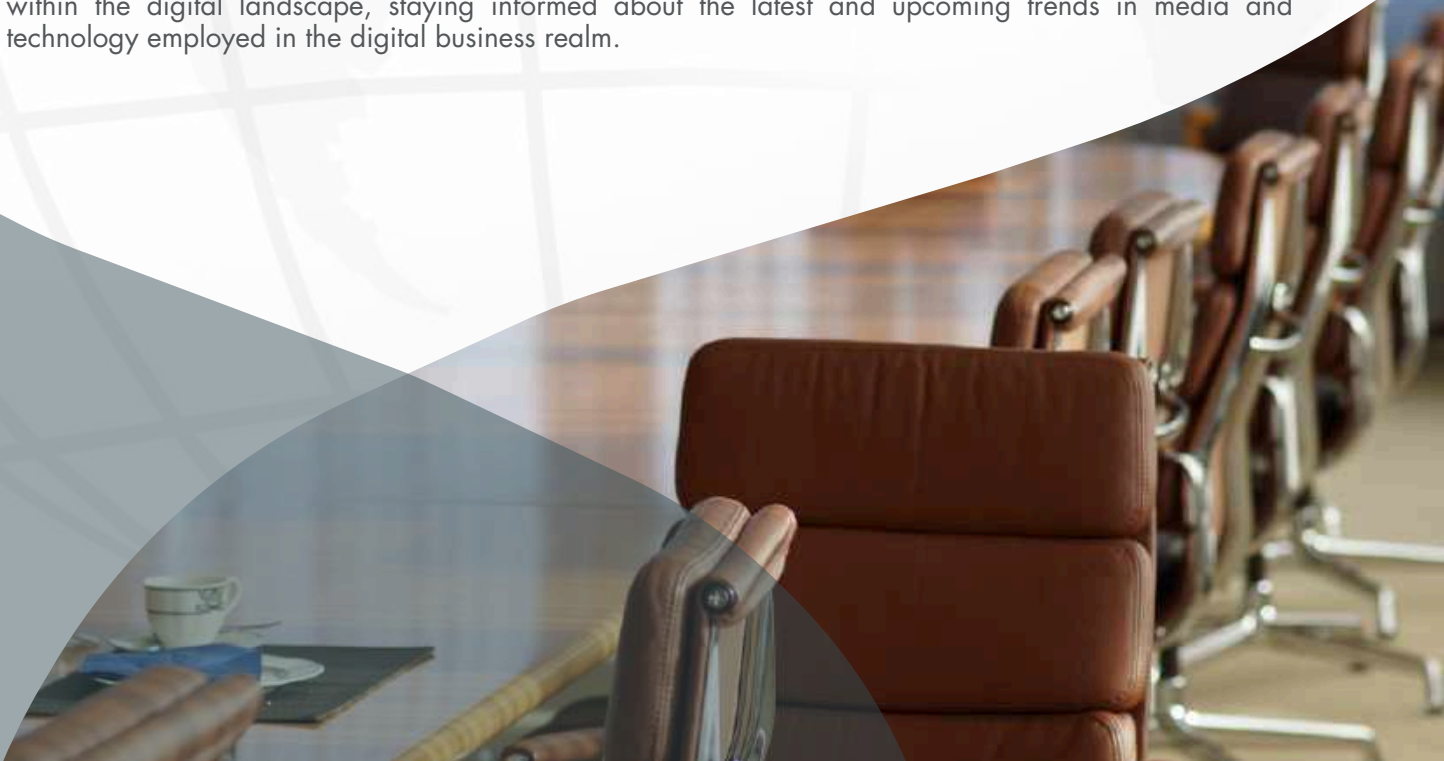
The Corporate Governance (CG) Programs focuses on roles, responsibilities and key issues faced by the board in the areas of risk management, succession planning and talent management, strategy, financial reporting and stakeholder management.

Designed specifically for directors or individuals moving into key governance roles, our Corporate Governance programs are geared towards updating and enhancing the skills of directors to more effectively fulfil their fiduciary duties. Our diverse range of offerings include mandated Financial Institution Directors' Education (FIDE) as well as comprehensive open enrollment and custom programs.

Digitalization Programs

Technology has become an essential component of our lives, affecting the way we communicate, work, learn, and even entertain ourselves. This module aims to provide participants with an understanding and appreciation of the digital landscape. It will also provide an appreciation of the current and emerging trends in media/technology used and an understanding of the many issues that impact the digital landscape.

Acquire insights into the essence and future trajectory of digital business, pinpointing key challenges within the digital landscape, staying informed about the latest and upcoming trends in media and technology employed in the digital business realm.





Sustainability Programs

From the now painfully-apparent impact of climate change, to the widespread consequences of poor employment terms and worker living conditions, to the growing pressure on governments, industries and corporations to toe the triple bottom line, global consciousness – and concern – on sustainability has never been higher.

No longer just a buzzword or confined to the “corporate social responsibility” sphere, sustainability is – and should be – at the very foundation of every organization that is determined to remain relevant in the next few decades. Our new Sustainability Series was created to help industry players achieve a fine balance between profits and sustainable growth, progress and impact through practical strategies, solutions and tools built with the future in mind.



EXPEDITING EXPERTISE

Scan here to learn more about our
Executive Education programs.



asb.edu.my/executive-education



**ASIA School
of Business**
in collaboration with MIT Sloan Management

Iclif Executive Education Center

To learn more, contact ExecEd@asb.edu.my

Asia School of Business Iclif Executive Education Center
ASB Academic, No 11, Jalan Dato' Onn, 50480 Kuala Lumpur
Phone: +603 2023 3000

asb.edu.my



asbiclif



@asb.iclif



@asb.iclif



asbiclif